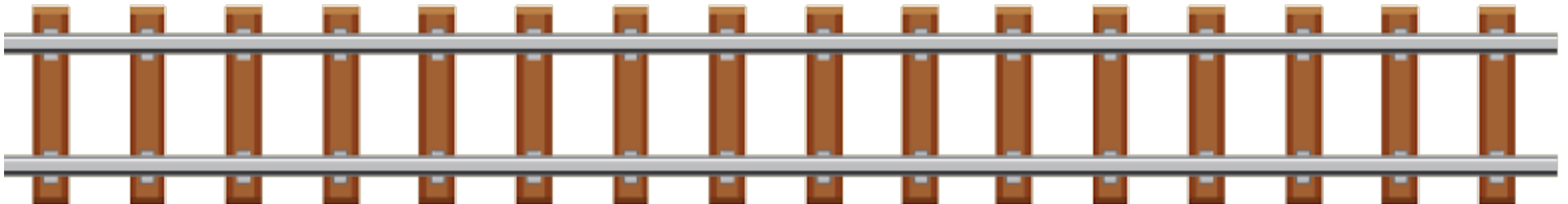
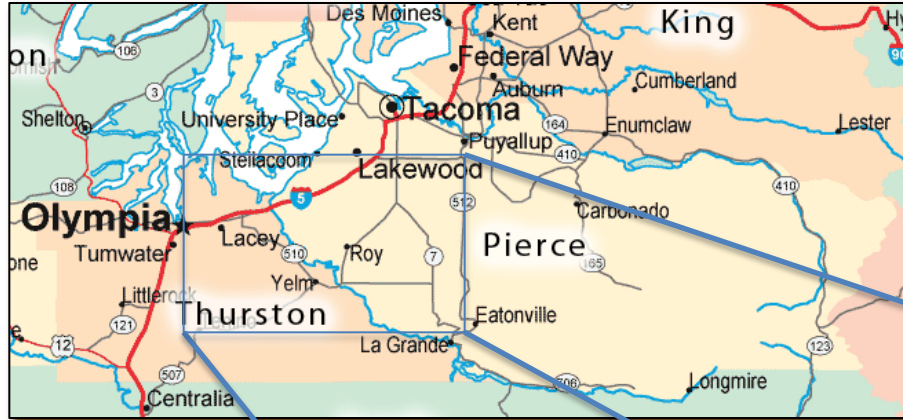


Yelm Prairie Line Trail

“Connecting Yelm and Roy with 5-miles of Prairie Pride”

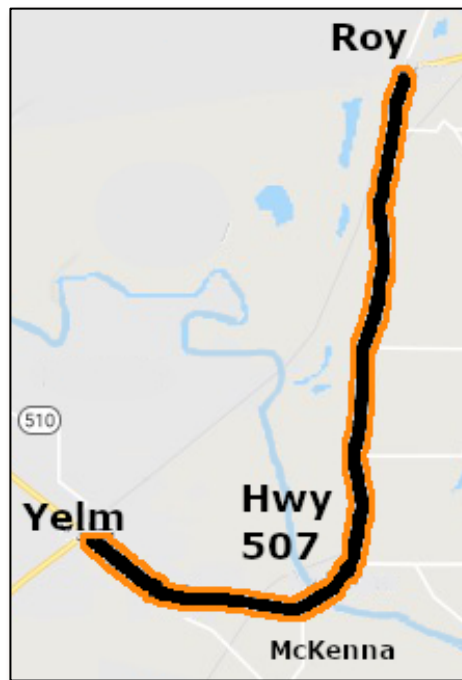


Project Location

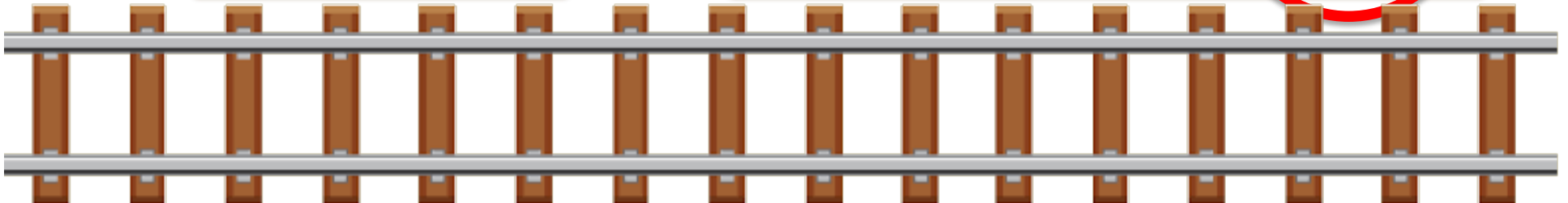
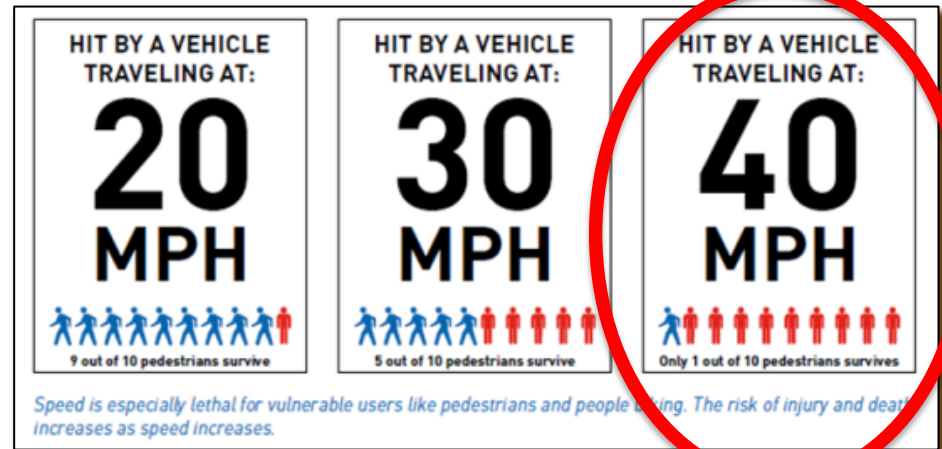


Current Conditions

- SR 507 is the only connection between these two cities

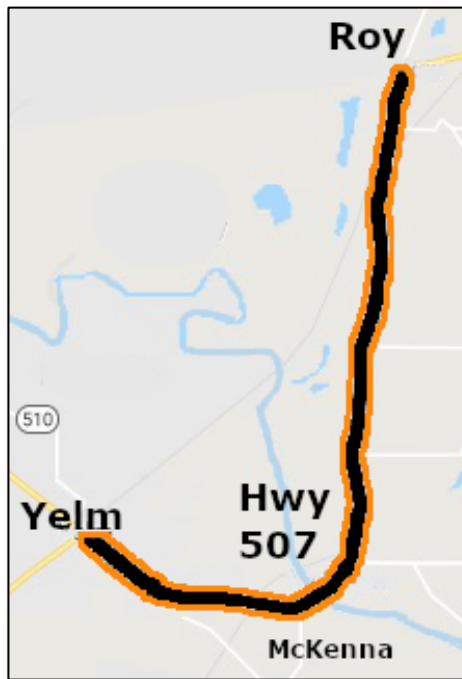


- Commute traffic is heavy
- Route lacks sidewalks, shoulder widths are inconsistent and debris is commonly present
- Posted speeds: 35mph-50mph

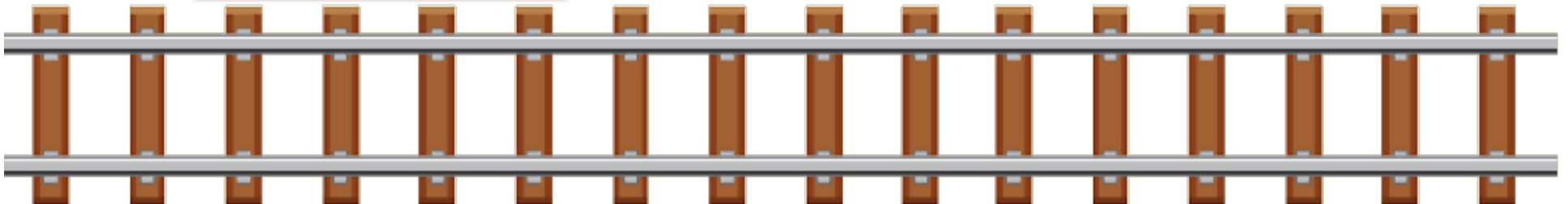


Current Conditions

- SR 507 is the only connection between these two cities

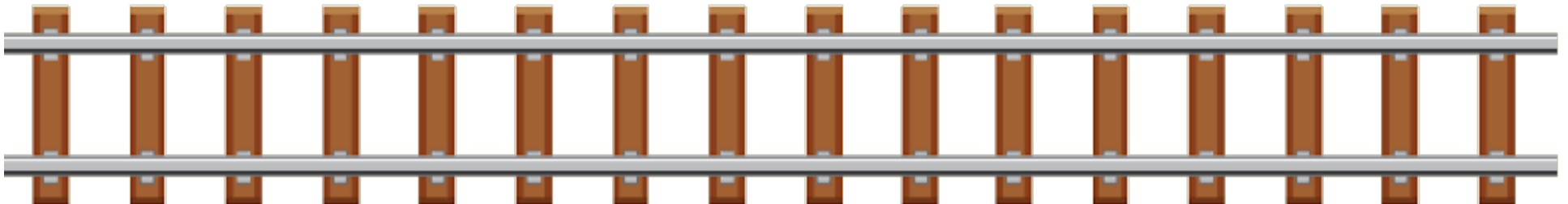
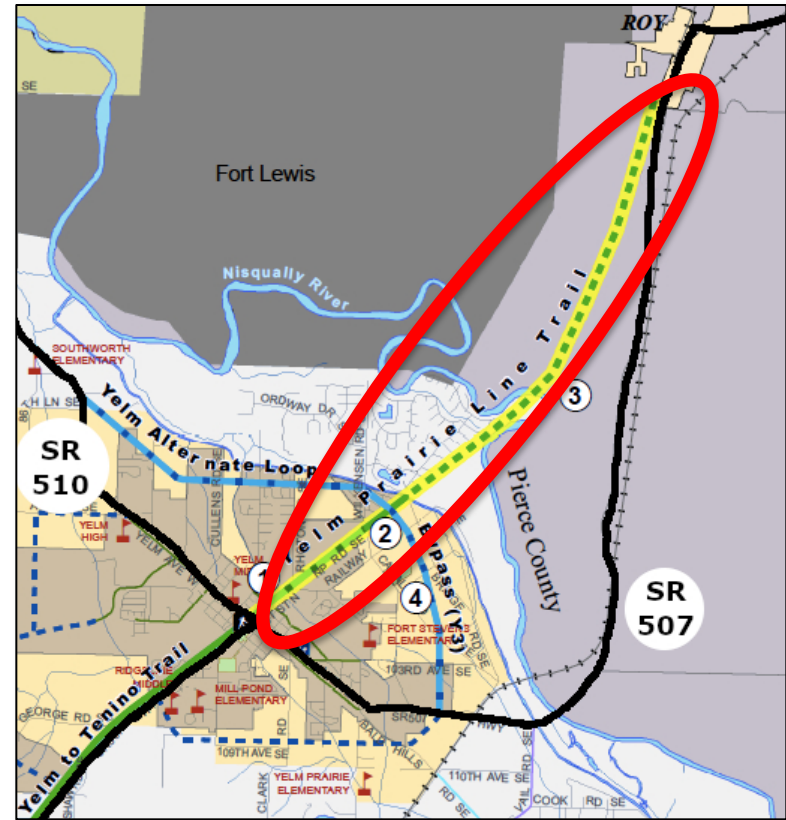


- Commute traffic is heavy
- Route lacks sidewalks, shoulder widths are inconsistent and debris is commonly present
- Posted speeds: 35mph-50mph
- From 2008-2018, there were 512 collisions along this stretch of highway. (source: WSDOT)
- Eight collisions involved cyclists or pedestrians.
- Two of those collisions were fatal.



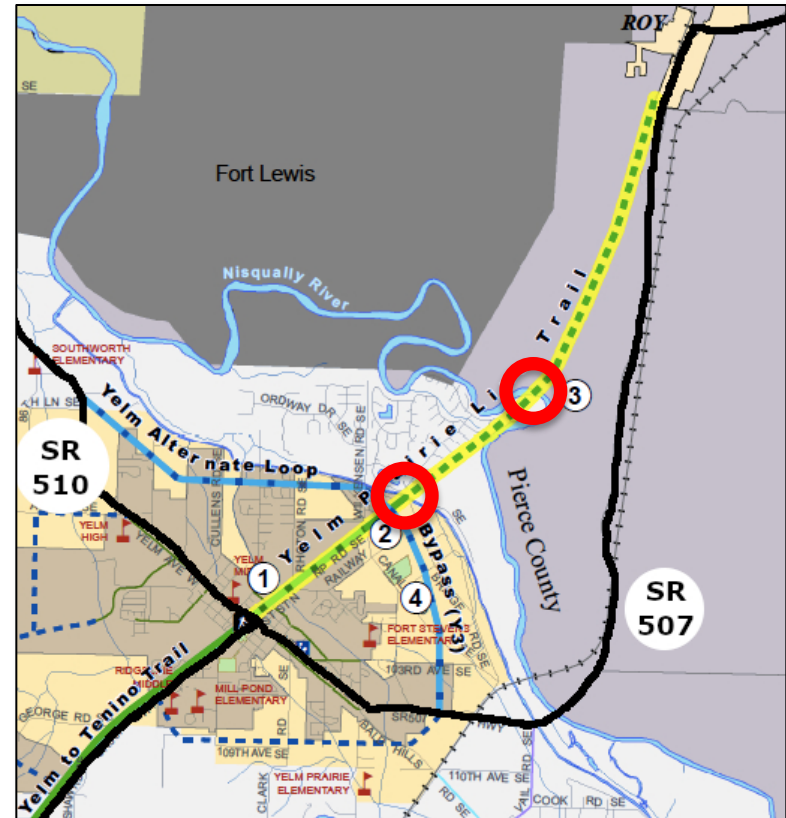
Project Description

- A 5-mile shared-use path on a former RR right-of-way that Yelm bought in 1998 from Burlington Northern.



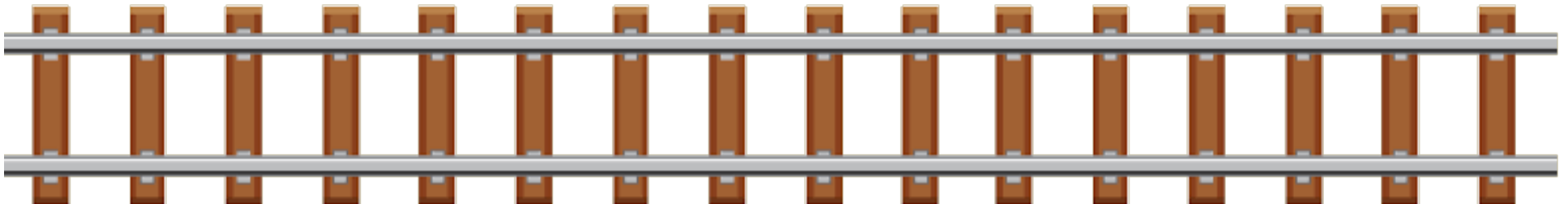
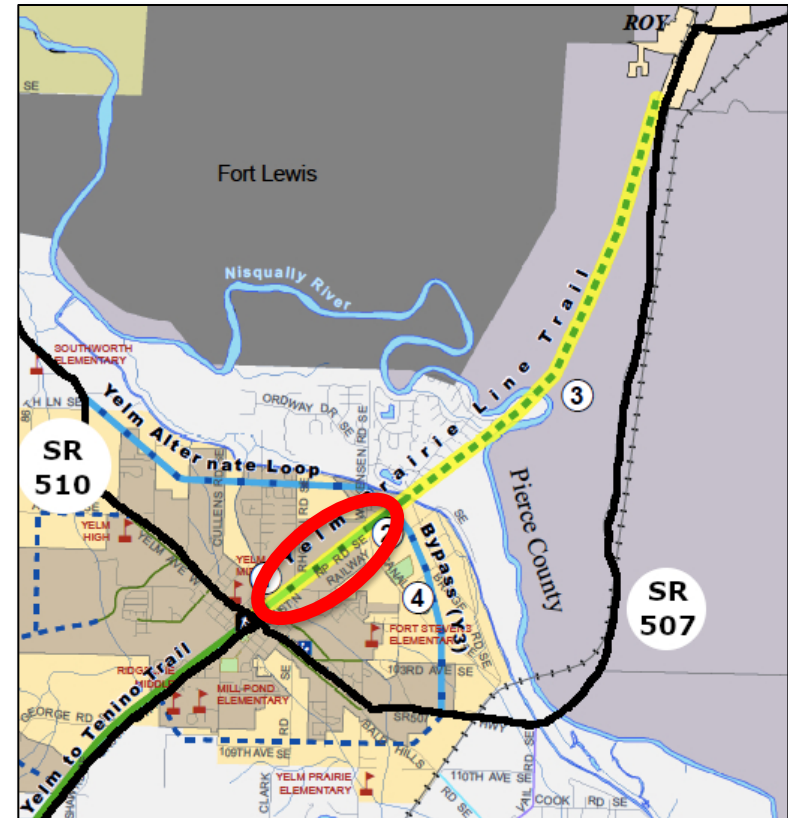
Project Description

- A 5-mile shared-use path on a former RR right-of-way that Yelm bought in 1998 from Burlington Northern.
- Bridges over Centralia Canal and Nisqually River are intact



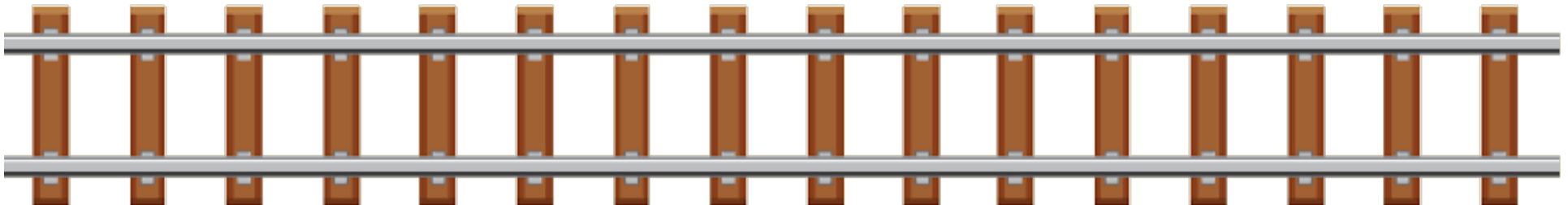
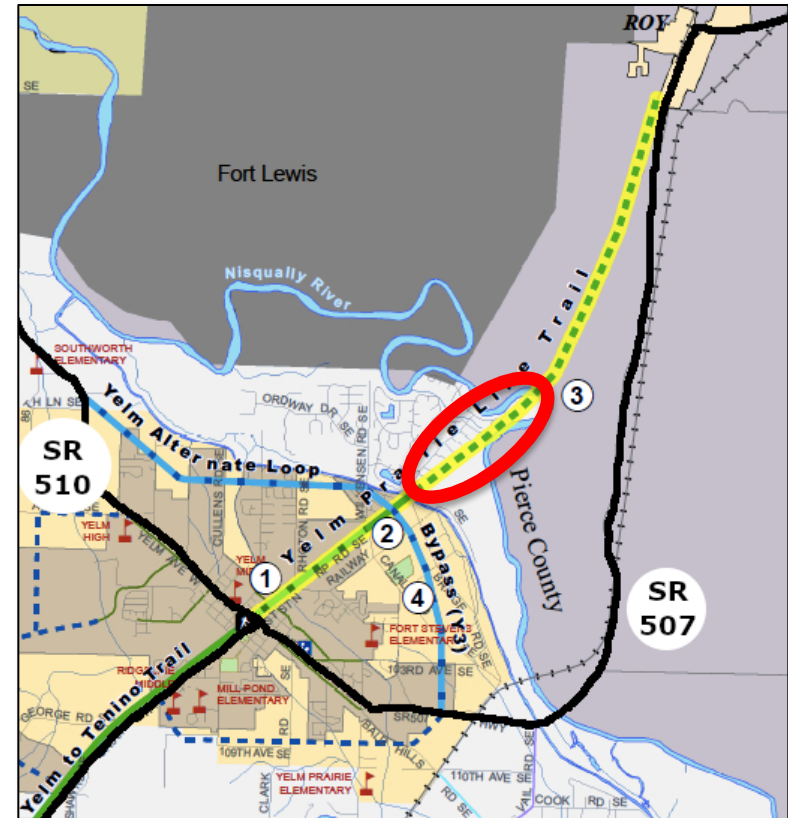
Project Description

- A 5-mile shared-use path on a former RR right-of-way that Yelm bought in 1998 from Burlington Northern.
- Bridges over Centralia Canal and Nisqually River are intact
- Trail development in process:
 - Phase 1: Complete



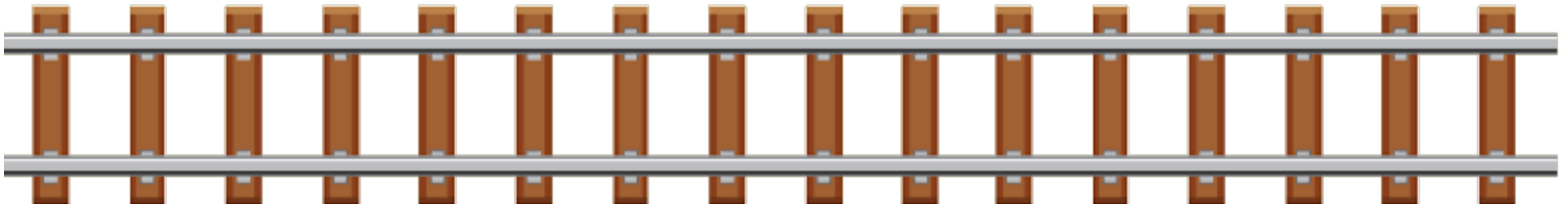
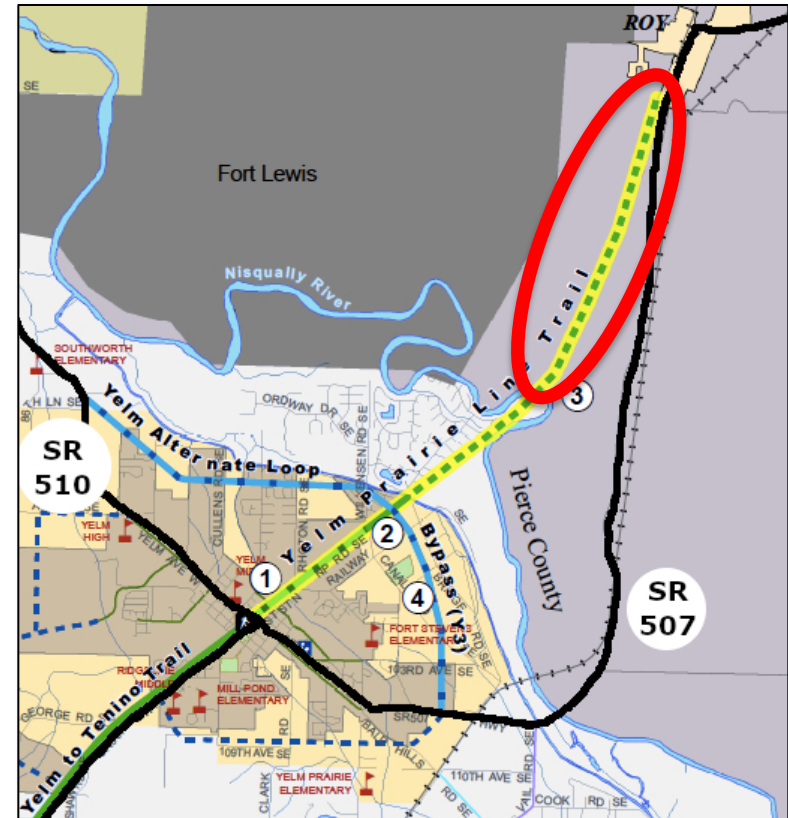
Project Description

- A 5-mile shared-use path on a former RR right-of-way that Yelm bought in 1998 from Burlington Northern.
- Bridges over Centralia Canal and Nisqually River are intact
- Trail development in process:
 - Phase 1: Complete
 - Phase 2: Yelm seeking funds



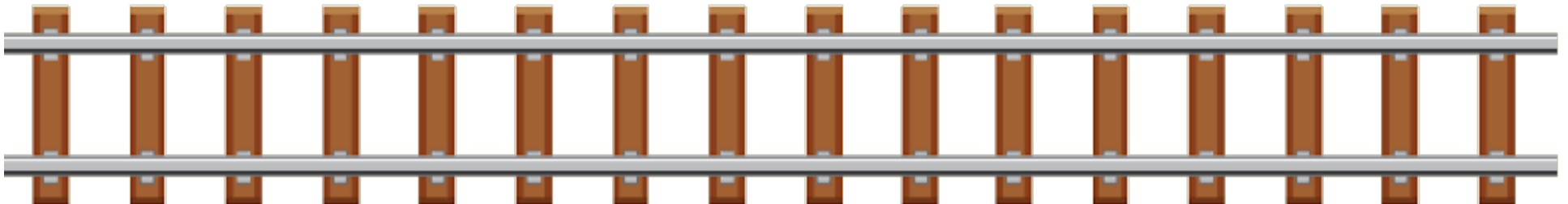
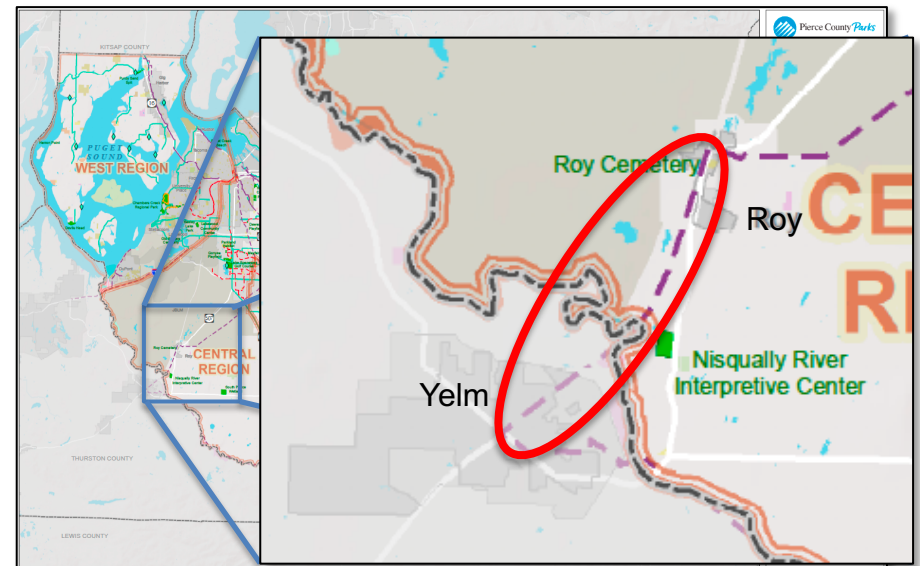
Project Description

- A 5-mile shared-use path on a former RR right-of-way that Yelm bought in 1998 from Burlington Northern.
- Bridges over Centralia Canal and Nisqually River are intact
- Trail development in process:
 - Phase 1: Complete
 - Phase 2: Yelm seeking funds
 - Phase 3: “River to Roy”



Project Description

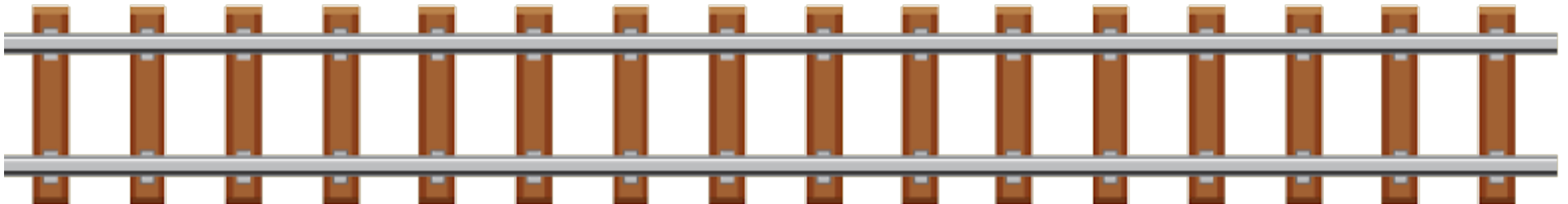
- A 5-mile shared-use path on a former RR right-of-way that Yelm bought in 1998 from Burlington Northern.
- Consistent w/ Thurston & Pierce regional and countywide planning policies, parks plans & Yelm/Roy Comprehensive Plans
- Bridges over Centralia Canal and Nisqually River are intact
- Trail development in process:
 - Phase 1: Complete
 - Phase 2: Yelm seeking funds
 - Phase 3: “River to Roy”



Trail Benefits for Roy

- Enhances Roy's downtown identity — trailhead will compliment a future city park and civic gathering space
- Stimulates businesses by providing access for hungry & thirsty trail users
- TDM: active transportation improvements, future P&R lot
- Provides residents access to:
 - Shopping and employment in Yelm
 - Thurston County's extensive 57+ mile-long trails system
 - Transit in Thurston County serving Amtrak, Olympia, and the greater regional network. Roy is outside Pierce Transit's service area (PT's closest bus stop is 7.6 miles away, north on SR 507)

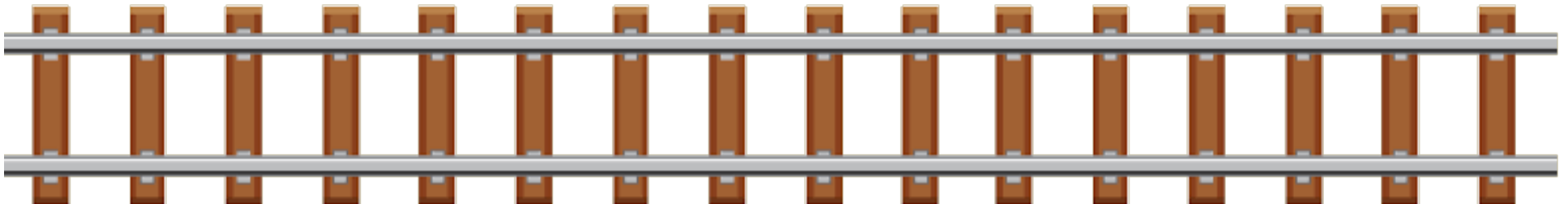
**Economic & community enhancement,
multimodal access, social justice**



Trail Benefits for Yelm

- Connects North Yelm neighborhoods to trails for Safe Routes to Schools and active lifestyles
- Connects to SR 510 re-alignment bike/pedestrian path
- Enables a bike commute option between Yelm and JBLM
- Provides a transportation demand management tool to reduce traffic congestion in the commercial core

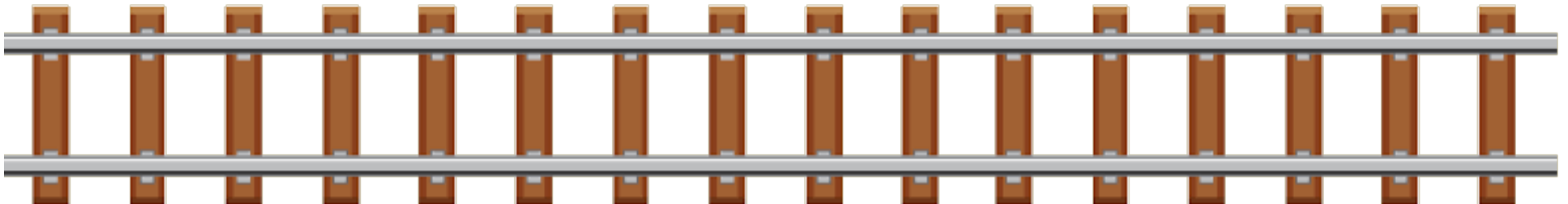
System efficiency, health & wellness, youth safety, builds multimodal network



Other Trail Benefits

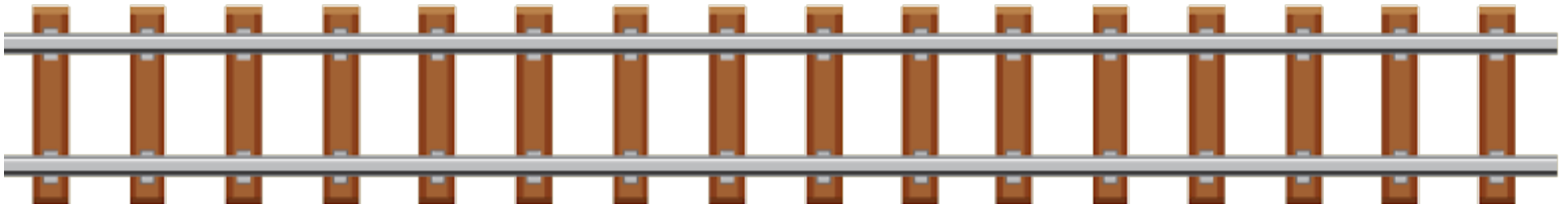
- New Nisqually River crossing for people of all ages & abilities
- Supports Target/Vision Zero by reducing exposure & risk
- Preserves future regional mobility options
- Network redundancy in the event of disaster or emergency
- Crucial connection for WA cross-state & national rail trails
- Natural and local history education and awareness

Mobility options, traffic safety, emergency preparedness, tourism



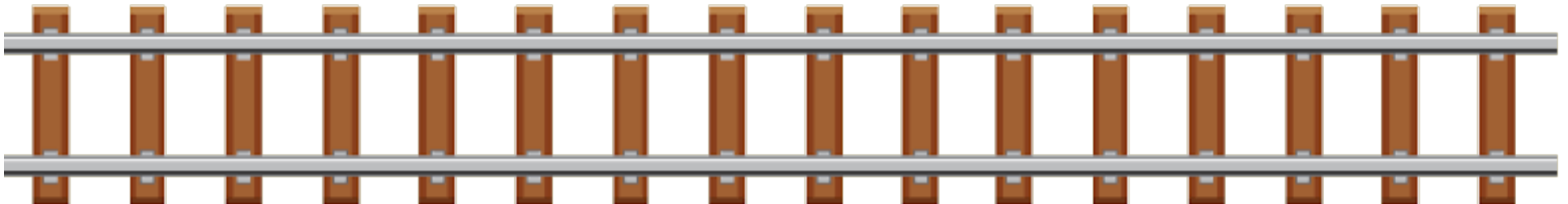
Trail Challenges

- Multi-county project with smaller cities
- Smaller cities with limited resources
- Unknown extent of Yelm's ownership
- Challenging process of converting RR line to a trail
- Lack of widespread awareness of project benefits
- Need for broad support to elevate project



ForeverGreen Support

- Coordinated an 18-member coalition
- Raised funds for PSRC grant for Roy
- Provided grant application support for Roy and Yelm
- Gained support from city, county, state, and federal elected officials
- Elevated the trail in the Pierce County Parks, Recreation and Open Space update (planning in 2024 and construction in 2026)
- Acquired National Parks Service in-kind planning grant
- Providing technical support for Yelm's rail banking process
- Recruited in-kind title research support regarding ROW ownership



Trail Coalition



TACOMA WASHINGTON
BICYCLE CLUB



Pierce County

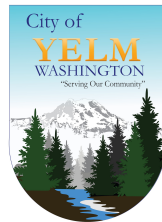
FOOTHILLS
RAILS-TO-TRAILS



COALITION



City of Roy



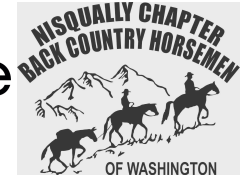
Woodland Trail
Greenway Assn.



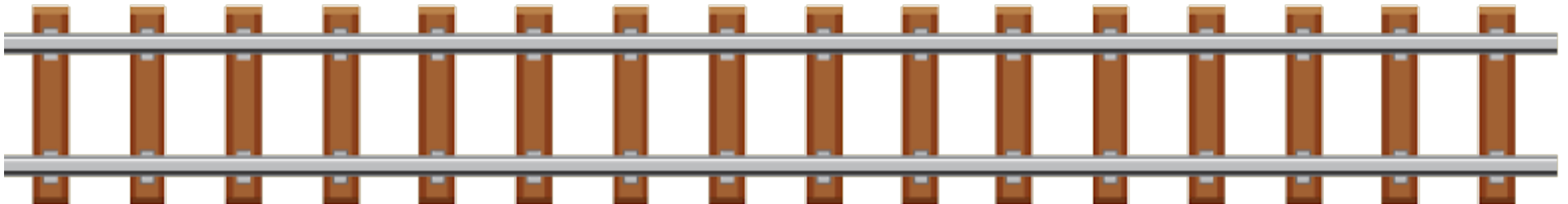
Nisqually Indian Tribe
dx^wsq^wali[?] abš
People of the river, people of the grass



cascade
BICYCLE CLUB



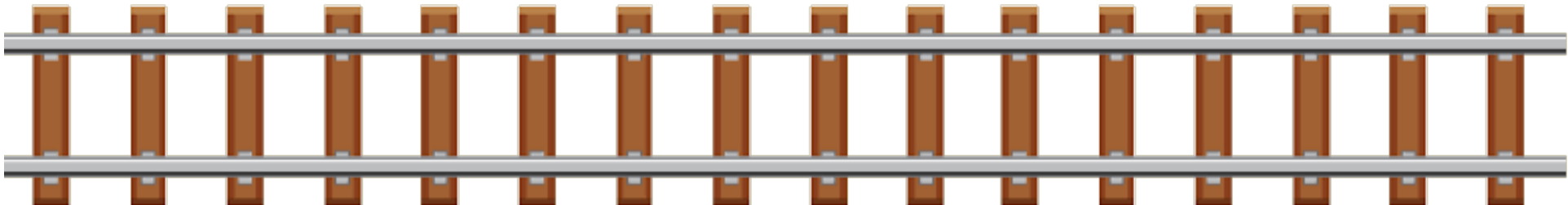
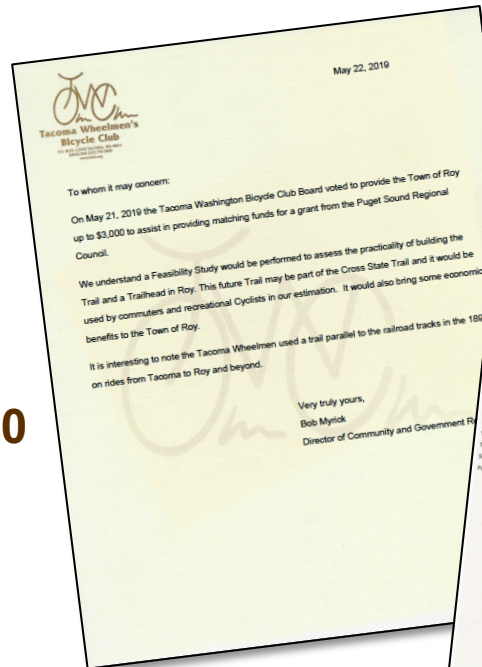
And growing...



PSRC Grant Request

- Planning grant request for Pierce County Section only
- Grant request: \$45,000
- Local Match: \$7,023
- Tacoma WA Bike Club: \$3000
- Foothills-Rails-to-Trails Coalition: \$4023

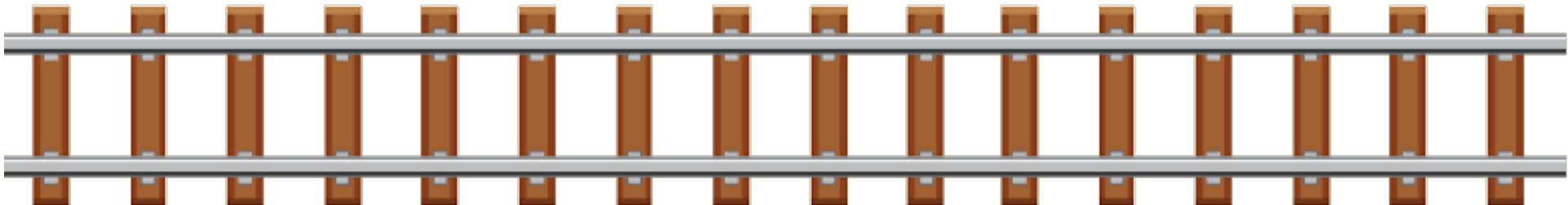
**Local Match
covered 100%**



PSRC Grant Request

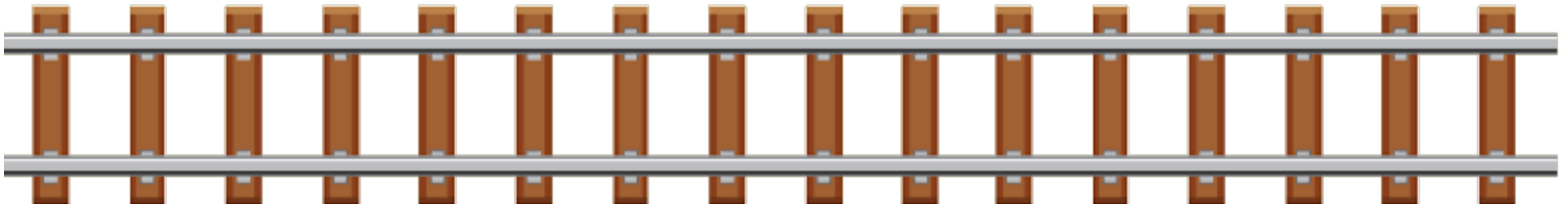
- Planning grant request for Pierce County Section only
- Grant request: \$45,000
- Local Match: \$7,023
- Tacoma WA Bike Club: \$3000
- Foothills-Rails-to-Trails Coalition: \$4023

**Grant awarded
October 2019!**



NPS Grant Request

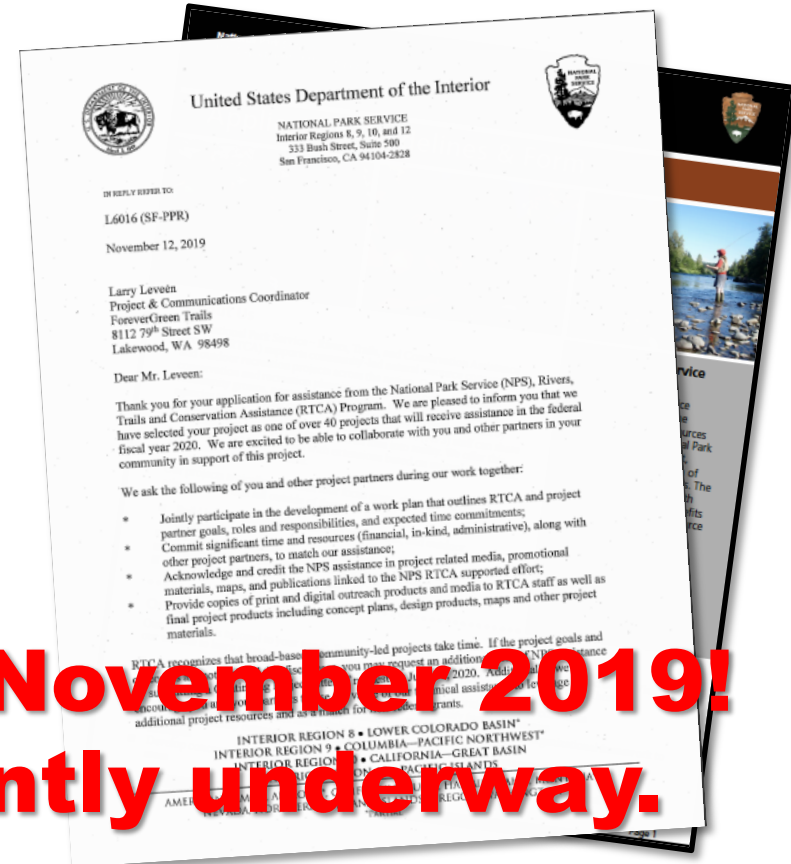
- National Parks Service
Rivers, Trails & Conservation
Assistance Program (RTCA)
- In-kind planning assistance:
 - public outreach & user surveys
 - conceptual planning
 - graphics & presentation
 - professional planners &
landscape architects



NPS Grant Request

- National Parks Service Rivers, Trails & Conservation Assistance Program (RTCA)
- In-kind planning assistance:
 - public outreach & user surveys
 - conceptual planning
 - graphics & presentation
 - professional planners & landscape architects

Grant awarded November 2019!
Process currently underway.



Yelm Prairie Line Trail

For more information contact:

larryleveen@forevergreentrails.org

